



SV16-22

2 Way, Normally Closed, 207 BAR Rated

A solenoid-operated, 2-way, normally closed, poppet-type, screw-in hydraulic cartridge valve, designed to function as a load-holding or blocking valve in applications requiring low internal leakage.

Materials

Cartridge:

Weight: 0.31 kg. (0.69 lbs.)
Steel with hardened work surfaces.
Zinc-plated exposed surfaces.
Buna N O-rings and polyester elastomer back-up standard.

Standard Ported Body:

Weight: 0.57 kg. (1.25 lbs.)
Anodized high-strength 6061 T6 aluminum alloy, rated to 207 bar (3000 psi).
Ductile iron bodies available; dimensions may differ.

Standard Coil:

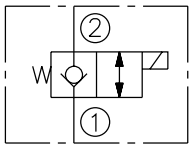
Weight: 0.27 kg. (0.60 lbs.)
Unitized thermoplastic encapsulated.

Voltage	Hydraforce code	Article no.	Price £	Price €
CARTRIDGE VERSION				
24V DC	SV16-22-0-N-24DG	SV1622C24	£155.90	€187.10
110V AC	SV16-22-0-N-115AG	SV1622C115	£179.20	€215.10
220V AC	SV16-22-0-N-230AG	SV1622C230	£179.20	€215.10
INLINE WITH BODY 3/4" BSP				
24V DC	SV16-22-6B-N-24DG	SV16226B24	£215.10	€258.20
110V AC	SV16-22-6B-N-115AG	SV16226B110	£238.40	€286.10
220V AC	SV16-22-6B-N-230AG	SV16226B230	£238.40	€286.10
INLINE WITH BODY 1" BSP				
24V DC	SV16-22-8B-N-24DG	SV16228B24	£214.30	€257.20
110V AC	SV16-22-8B-N-115AG	SV16228B115	£237.60	€285.20
220V AC	SV16-22-8B-N-230AG	SV16228B230	£237.60	€285.20
with nitril seals				
WITH 'G' DIN CONNECTOR PLUG				

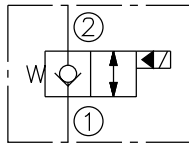
On request - Viton Seals - Screen filter protection - Manual Override
On request - For DC coils with spade or push on connections

Symbols

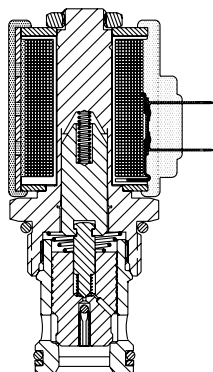
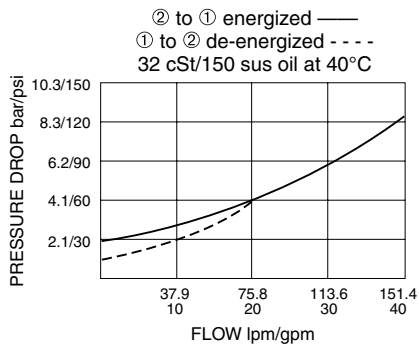
USASI:



ISO:



Performance (Cartridge Only)



Dimensions

