



SV12-21

2 Way, Normally Open, 207 BAR Rated

A solenoid-operated, 2-way, normally open, poppet-type, screw-in hydraulic cartridge valve, designed to function as a load holding or blocking valve in applications requiring low internal leakage.

Materials

Cartridge:

Weight: 0.25 kg. (0.55 lbs.)
Steel with hardened work surfaces.
Zinc-plated exposed surfaces.
Buna N O-rings and polyester elastomer back-up standard.

Standard Ported Body:

Weight: 0.57 kg. (1.25 lbs.)
Anodized highstrength 6061 T6 aluminum alloy, rated to 207 bar (3000 psi).
Ductile iron bodies available; dimensions may differ.

Standard Coil:

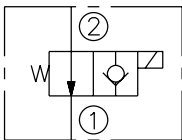
Weight: 0.27 kg. (0.60 lbs.)
Unitized thermoplastic encapsulated.

Voltage	Hydraforce code	Article no.	Price £	Price €
CARTRIDGE VERSION				
24V DC	SV12-21-0-N-24DG	SV1221C24	£160.30	€192.40
110V AC	SV12-21-0-N-115AG	SV1221C115	£180.10	€216.10
220V AC	SV12-21-0-N-230AG	SV1221C230	£180.10	€216.10
INLINE WITH BODY 3/4" BSP				
24V DC	SV12-21-6B-N-24DG	SV12216B24	£222.10	€266.50
110V AC	SV12-21-6B-N-115AG	SV12216B110	£241.90	€290.30
220V AC	SV12-21-6B-N-230AG	SV12216B230	£241.90	€290.30
INLINE WITH BODY 1" BSP				
24V DC	SV12-21-8B-N-24DG	SV12218B24	£220.90	€265.10
110V AC	SV12-21-8B-N-115AG	SV12218B115	£240.70	€288.80
220V AC	SV12-21-8B-N-230AG	SV12218B230	£240.70	€288.80
with nitril seals				
WITH 'G' DIN CONNECTOR PLUG				

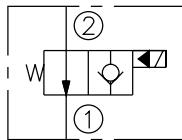
On request - Viton Seals - Screen filter protection - Manual Override
On request - For DC coils with spade or push on connections

Symbols

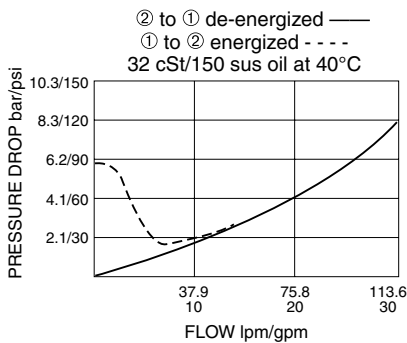
USASI:



ISO:



Performance (Cartridge Only)



Dimensions

