

SV12-20

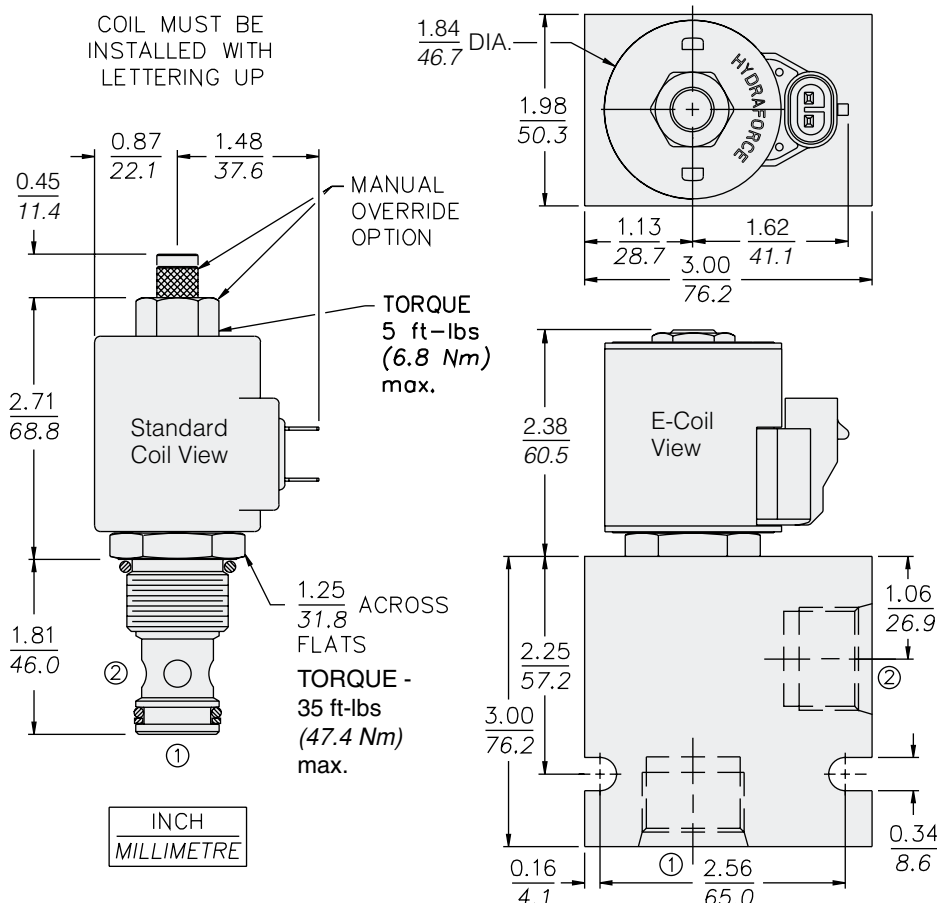
2 Way, Normally closed, 207 BAR Rated

A solenoid-operated, 2-way, normally closed, poppet-type, screw-in hydraulic cartridge valve, designed to function as a load holding or blocking valve in applications requiring low internal leakage.

Voltage	Hydraforce code	Article no.	Price £	Price €
CARTRIDGE VERSION				
24V DC	SV12-20-0-N-24DG	SV1220C24	£138.90	€166.70
110V AC	SV12-20-0-N-115AG	SV1220C115	£158.70	€190.50
220V AC	SV12-20-0-N-230AG	SV1220C230	£158.70	€190.50
INLINE WITH BODY 3/4" BSP				
24V DC	SV12-20-6B-N-24DG	SV12206B24	£200.70	€240.80
110V AC	SV12-20-6B-N-115AG	SV12206B110	£220.50	€264.60
220V AC	SV12-20-6B-N-230AG	SV12206B230	£220.50	€264.60
INLINE WITH BODY 1" BSP				
24V DC	SV12-20-8B-N-24DG	SV12208B24	£199.50	€239.40
110V AC	SV12-20-8B-N-115AG	SV12208B115	£219.30	€263.20
220V AC	SV12-20-8B-N-230AG	SV12208B230	£219.30	€263.20
with nitril seals				
WITH 'G' DIN CONNECTOR PLUG				

On request - Viton Seals - Screen filter protection - Manual Override
On request - For DC coils with spade or push on connections

Dimensions



HYDRAFORCE

Materials

Cartridge:

Weight: 0.25 kg. (0.55 lbs.)
Steel with hardened work surfaces.
Zinc-plated exposed surfaces.
Buna N O-rings and polyester elastomer back-up standard.

Standard Ported Body:

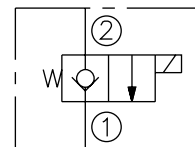
Weight: 0.57 kg. (1.25 lbs.)
Anodized highstrength 6061 T6 aluminum alloy, rated to 207 bar (3000 psi).
Ductile iron bodies available; dimensions may differ.

Standard Coil:

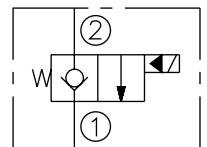
Weight: 0.27 kg. (0.60 lbs.)
Unitized thermoplastic encapsulated.

Symbols

USASI:



ISO:



Performance (Cartridge Only)

