

Materials

Cartridge:

Weight: 0.20 kg. (0.45 lbs.)
Steel with hardened work surfaces.
Zinc-plated exposed surfaces.
Buna N O-rings and polyester elastomer back-up standard.

Standard Ported Body:

Weight: 0.36 kg. (0.80 lbs.)
Anodized high-strength 6061 T6 aluminum alloy, rated to 207 bar (3000 psi).
Ductile iron bodies available; dimensions may differ.

Standard Coil:

Weight: 0.27 kg. (0.60 lbs.)
Unitized thermoplastic encapsulated.

SV10-40

4 Way, 2 Position, Spool, 207 BAR Rated

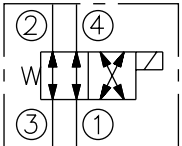
A solenoid-operated, four-way, two-position, direct-acting, spool-type, screw-in hydraulic cartridge valve.

Voltage	Hydraforce code	Article no.	Price £	Price €
CARTRIDGE VERSION				
24V DC	SV10-40-0-N-24DG	SV1040C24	£115.50	€138.60
110V AC	SV10-40-0-N-115AG	SV1040C115	£135.30	€162.30
220V AC	SV10-40-0-N-230AG	SV1040C230	£135.30	€162.30
INLINE WITH BODY 1/4" BSP				
24V DC	SV10-40-2B-N-24DG	SV10402B24	£177.70	€213.20
110V AC	SV10-40-2B-N-115AG	SV10402B110	£197.50	€237.00
220V AC	SV10-40-2B-N-230AG	SV10402B230	£197.50	€237.00
INLINE WITH BODY 3/8" BSP				
24V DC	SV10-40-3B-N-24DG	SV10403B24	£172.90	€207.40
110V AC	SV10-40-3B-N-115AG	SV10403B110	£192.60	€231.20
220V AC	SV10-40-3B-N-230AG	SV10403B230	£192.60	€231.20
with nitril seals				
WITH 'G' DIN CONNECTOR PLUG				

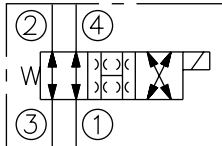
On request - Viton Seals - Screen filter protection - Manual Override
On request - For DC coils with spade or push on connections

Symbols

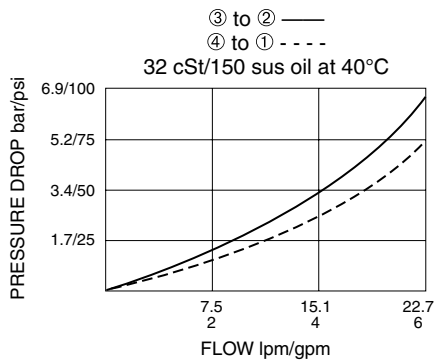
USASI/ISO:



TRANSITION:



Performance (Cartridge Only)



Dimensions

