

Materials

Cartridge:

Weight: 0.14 kg. (0.30 lbs.)
Steel with hardened work surfaces.
Zinc-plated exposed surfaces.
Buna N O-rings and polyester elastomer back-up standard.

Standard Ported Body:

Weight: 0.36 kg. (0.80 lbs.)
Anodized high-strength 6061 T6 aluminum alloy, rated to 207 bar (3000 psi).
Ductile iron bodies available; dimensions may differ.

Standard Coil:

Weight: 0.27 kg. (0.60 lbs.)
Unitized thermoplastic encapsulated.

SV10-31

3 Way, Spool, 207 BAR Rated

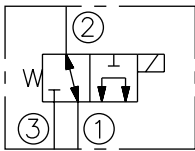
A solenoid-operated, three-way, direct-acting, spool-type, screw-in hydraulic cartridge valve.

Voltage	Hydraforce code	Article no.	Price £	Price €
CARTRIDGE VERSION				
24V DC	SV10-31-0-N-24DG	SV1031C24	£114.30	€137.10
110V AC	SV10-31-0-N-115AG	SV1031C115	£134.10	€160.90
220V AC	SV10-31-0-N-230AG	SV1031C230	£134.10	€160.90
INLINE WITH BODY 1/4" BSP				
24V DC	SV10-31-2B-N-24DG	SV10312B24	£164.40	€197.20
110V AC	SV10-31-2B-N-115AG	SV10312B110	£184.20	€221.00
220V AC	SV10-31-2B-N-230AG	SV10312B230	£184.20	€221.00
INLINE WITH BODY 3/8" BSP				
24V DC	SV10-31-3B-N-24DG	SV10313B24	£164.40	€197.20
110V AC	SV10-31-3B-N-115AG	SV10313B110	£184.20	€221.00
220V AC	SV10-31-3B-N-230AG	SV10313B230	£184.20	€221.00
with nitril seals				
WITH 'G' DIN CONNECTOR PLUG				

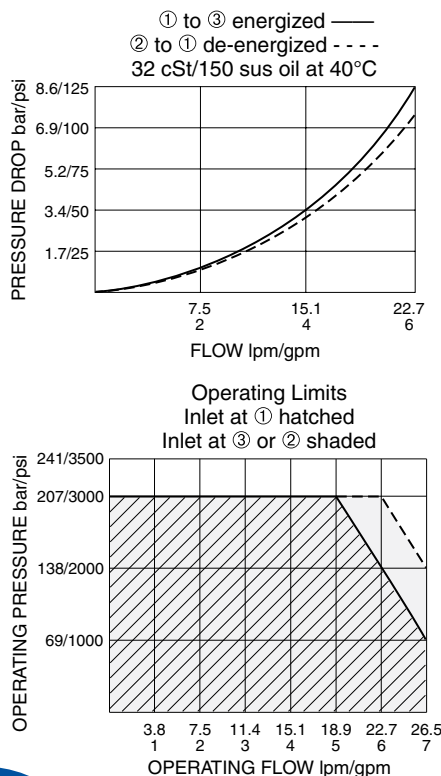
On request - Viton Seals - Screen filter protection - Manual Override
On request - For DC coils with spade or push on connections

Symbols

USASI/ISO:



Performance (Cartridge Only)



Dimensions

