



Materials

Cartridge:

Weight: 0.16 kg. (0.35 lbs.)
Steel with hardened work surfaces.
Zinc-plated exposed surfaces.
Buna N O-rings and polyester elastomer back-up standard.

Standard Ported Body:

Weight: 0.16 kg. (0.35 lbs.)
Anodized high-strength 6061 T6 aluminum alloy, rated to 207 bar (3000 psi).
Ductile iron bodies available; dimensions may differ.

Standard Coil:

Weight: 0.27 kg. (0.60 lbs.)
Unitized thermoplastic encapsulated.

SV10-28

2 Way, Normally Closed, 207 BAR Rated

A solenoid-operated, 2-way, normally closed, internally piloted, poppet-type, bi-directional blocking, screw-in hydraulic cartridge valve, designed for low leakage in load-holding applications.

Voltage	Hydraforce code	Article no.	Price £	Price €
CARTRIDGE VERSION				
24V DC	SV10-28-0-N-24DG	SV1028C24	£149.00	€178.80
110V AC	SV10-28-0-N-115AG	SV1028C115	£168.80	€202.60
220V AC	SV10-28-0-N-230AG	SV1028C230	£168.80	€202.60
INLINE WITH BODY 1/4" BSP				
24V DC	SV10-28-2B-N-24DG	SV10282B24	£187.80	€225.30
110V AC	SV10-28-2B-N-115AG	SV10282B110	£207.60	€249.10
220V AC	SV10-28-2B-N-230AG	SV10282B230	£207.60	€249.10
INLINE WITH BODY 3/8" BSP				
24V DC	SV10-28-3B-N-24DG	SV10283B24	£187.00	€224.40
110V AC	SV10-28-3B-N-115AG	SV10283B115	£206.80	€248.10
220V AC	SV10-28-3B-N-230AG	SV10283B230	£206.80	€248.10
INLINE WITH BODY 1/2" BSP				
24V DC	SV10-28-4B-N-24DG	SV10284B24	£187.00	€224.40
110V AC	SV10-28-4B-N-115AG	SV10284B115	£206.80	€248.10
220V AC	SV10-28-4B-N-230AG	SV10284B230	£206.80	€248.10

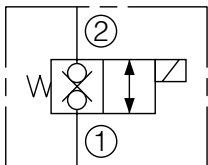
with nitril seals

WITH 'G' DIN CONNECTOR PLUG

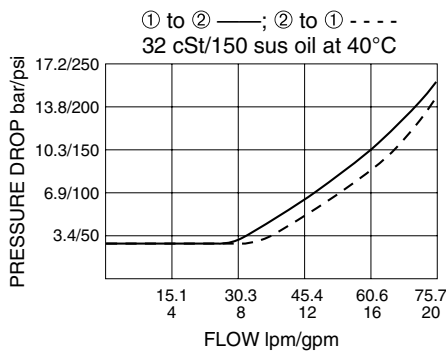
On request - Viton Seals - Screen filter protection - Manual Override
On request - For DC coils with spade or push on connections

Symbols

USASI/ISO:



Performance (Cartridge Only)



Dimensions

