

## SV10-25

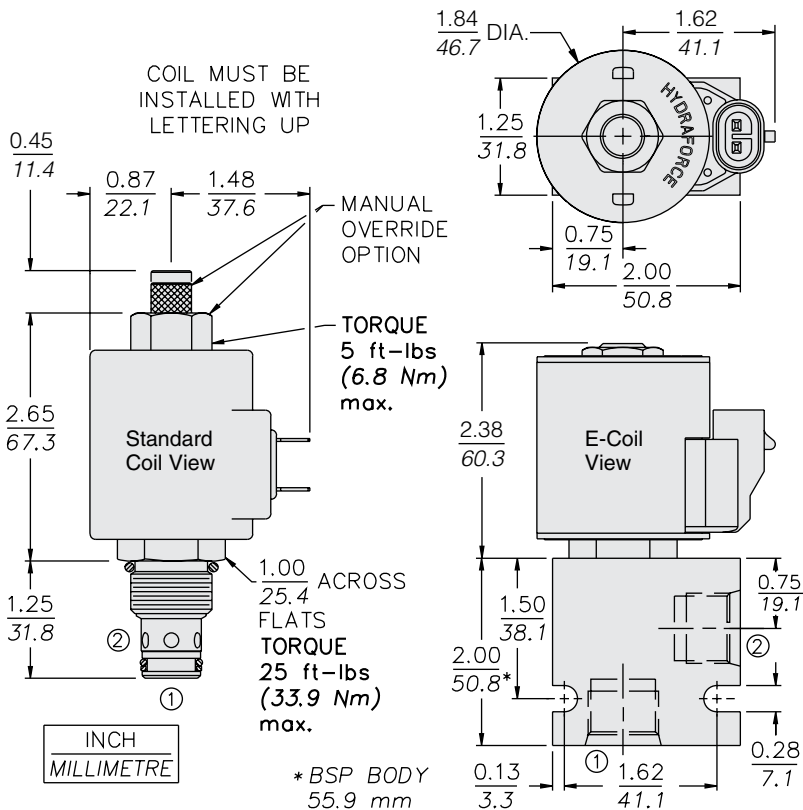
### 2 Way, Normally Open, 207 BAR Rated

A solenoid-operated, two-way, normally open, direct-acting, spool-type, screw-in hydraulic cartridge valve, designed to function as a bidirectional blocking valve.

Voltage	Hydraforce code	Article no.	Price £	Price €
<b>CARTRIDGE VERSION</b>				
24V DC	SV10-25-0-N-24DG	<b>SV1025C24</b>	<b>£104.60</b>	<b>€125.50</b>
110V AC	SV10-25-0-N-115AG	<b>SV1025C115</b>	<b>£124.40</b>	<b>€149.30</b>
220V AC	SV10-25-0-N-230AG	<b>SV1025C230</b>	<b>£124.40</b>	<b>€149.30</b>
<b>INLINE WITH BODY 1/4" BSP</b>				
24V DC	SV10-25-2B-N-24DG	<b>SV10252B24</b>	<b>£143.40</b>	<b>€172.00</b>
110V AC	SV10-25-2B-N-115AG	<b>SV10252B110</b>	<b>£163.10</b>	<b>€195.80</b>
220V AC	SV10-25-2B-N-230AG	<b>SV10252B230</b>	<b>£163.10</b>	<b>€195.80</b>
<b>INLINE WITH BODY 3/8" BSP</b>				
24V DC	SV10-25-3B-N-24DG	<b>SV10253B24</b>	<b>£142.60</b>	<b>€171.10</b>
110V AC	SV10-25-3B-N-115AG	<b>SV10253B115</b>	<b>£162.40</b>	<b>€194.80</b>
220V AC	SV10-25-3B-N-230AG	<b>SV10253B230</b>	<b>£162.40</b>	<b>€194.80</b>
<b>INLINE WITH BODY 1/2" BSP</b>				
24V DC	SV10-25-4B-N-24DG	<b>SV10254B24</b>	<b>£142.60</b>	<b>€171.10</b>
110V AC	SV10-25-4B-N-115AG	<b>SV10254B115</b>	<b>£162.40</b>	<b>€194.80</b>
220V AC	SV10-25-4B-N-230AG	<b>SV10254B230</b>	<b>£162.40</b>	<b>€194.80</b>
<b>with nitril seals</b>				
<b>WITH 'G' DIN CONNECTOR PLUG</b>				

On request - Viton Seals - Screen filter protection - Manual Override  
 On request - For DC coils with spade or push on connections

### Dimensions



HYDRAFORCE

### Materials

#### Cartridge:

Weight: 0.16 kg. (0.35 lbs.)  
 Steel with hardened work surfaces.  
 Zinc-plated exposed surfaces.  
 Buna N O-rings and polyester elastomer back-up standard.

#### Standard Ported Body:

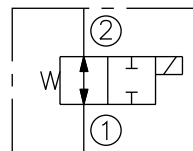
Weight: 0.16 kg. (0.35 lbs.)  
 Anodized high-strength 6061 T6 aluminum alloy, rated to 207 bar (3000 psi).  
 Ductile iron bodies available; dimensions may differ.

#### Standard Coil:

Weight: 0.27 kg. (0.60 lbs.)  
 Unitized thermoplastic encapsulated.

### Symbols

#### USASI/ISO:



### Performance (Cartridge Only)

