

## SV10-23

### 2 Way, Normally Open, 207 BAR Rated

A solenoid-operated, two-way, poppet-type, normally open, screw-in, hydraulic cartridge valve.

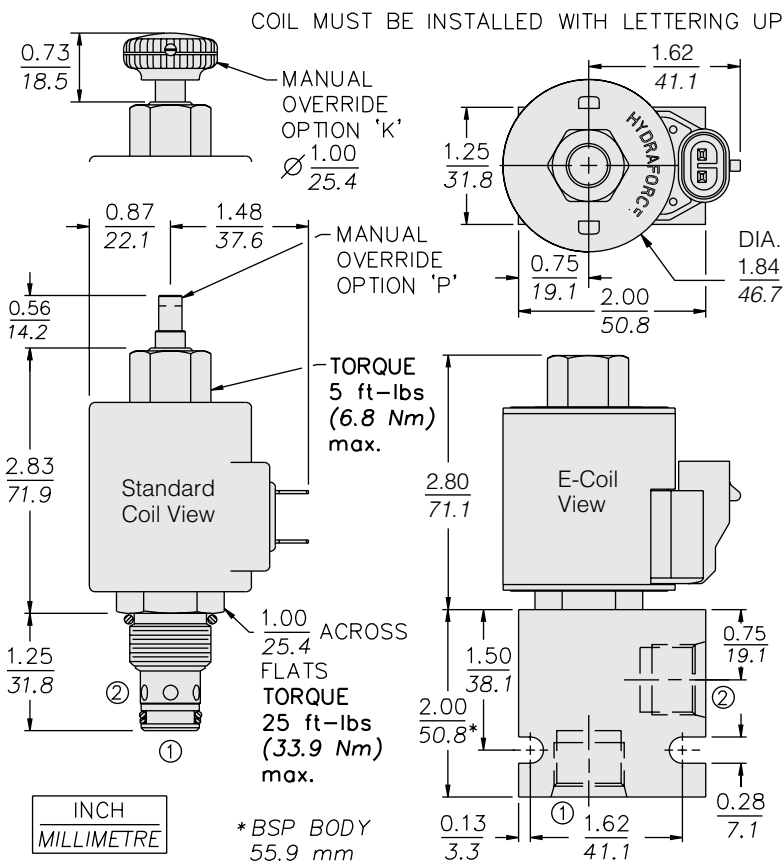
Voltage	Hydraforce code	Article no.	Price £	Price €
<b>CARTRIDGE VERSION</b>				
24V DC	SV10-23-0-N-24DG	<b>SV1023C24</b>	<b>£125.60</b>	<b>€150.70</b>
110V AC	SV10-23-0-N-115AG	<b>SV1023C115</b>	<b>£145.40</b>	<b>€174.50</b>
220V AC	SV10-23-0-N-230AG	<b>SV1023C230</b>	<b>£145.40</b>	<b>€174.50</b>
<b>INLINE WITH BODY 1/4" BSP</b>				
24V DC	SV10-23-2B-N-24DG	<b>SV10232B24</b>	<b>£164.40</b>	<b>€197.20</b>
110V AC	SV10-23-2B-N-115AG	<b>SV10232B110</b>	<b>£184.10</b>	<b>€221.00</b>
220V AC	SV10-23-2B-N-230AG	<b>SV10232B230</b>	<b>£184.10</b>	<b>€221.00</b>
<b>INLINE WITH BODY 3/8" BSP</b>				
24V DC	SV10-23-3B-N-24DG	<b>SV10233B24</b>	<b>£163.60</b>	<b>€196.30</b>
110V AC	SV10-23-3B-N-115AG	<b>SV10233B115</b>	<b>£183.40</b>	<b>€220.00</b>
220V AC	SV10-23-3B-N-230AG	<b>SV10233B230</b>	<b>£183.40</b>	<b>€220.00</b>
<b>INLINE WITH BODY 1/2" BSP</b>				
24V DC	SV10-23-4B-N-24DG	<b>SV10234B24</b>	<b>£163.60</b>	<b>€196.30</b>
110V AC	SV10-23-4B-N-115AG	<b>SV10234B115</b>	<b>£183.40</b>	<b>€220.00</b>
220V AC	SV10-23-4B-N-230AG	<b>SV10234B230</b>	<b>£183.40</b>	<b>€220.00</b>

with nitril seals

**WITH 'G' DIN CONNECTOR PLUG**

On request - Viton Seals - Screen filter protection - Manual Override  
 On request - For DC coils with spade or push on connections

### Dimensions



HYDRAFORCE

### Materials

#### Cartridge:

Weight: 0.16 kg. (0.35 lbs.)  
 Steel with hardened work surfaces.  
 Zinc-plated exposed surfaces.  
 Buna N O-rings and polyester elastomer back-up standard.

#### Standard Ported Body:

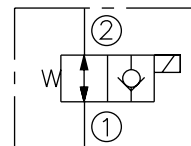
Weight: 0.16 kg. (0.35 lbs.)  
 Anodized high-strength 6061 T6 aluminum alloy, rated to 207 bar (3000 psi).  
 Ductile iron bodies available; dimensions may differ.

#### Standard Coil:

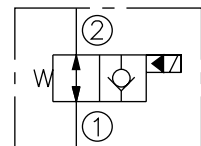
Weight: 0.27 kg. (0.60 lbs.)  
 Unitized thermoplastic encapsulated.

### Symbols

#### USASI:



#### ISO:



### Performance (Cartridge Only)

