

SV10-21

2 Way, Normally Open, 207 BAR Rated

A solenoid-operated, 2-way, piloted, poppet-type, normally open, screw-in, hydraulic cartridge valve designed for low leakage in load-holding applications.

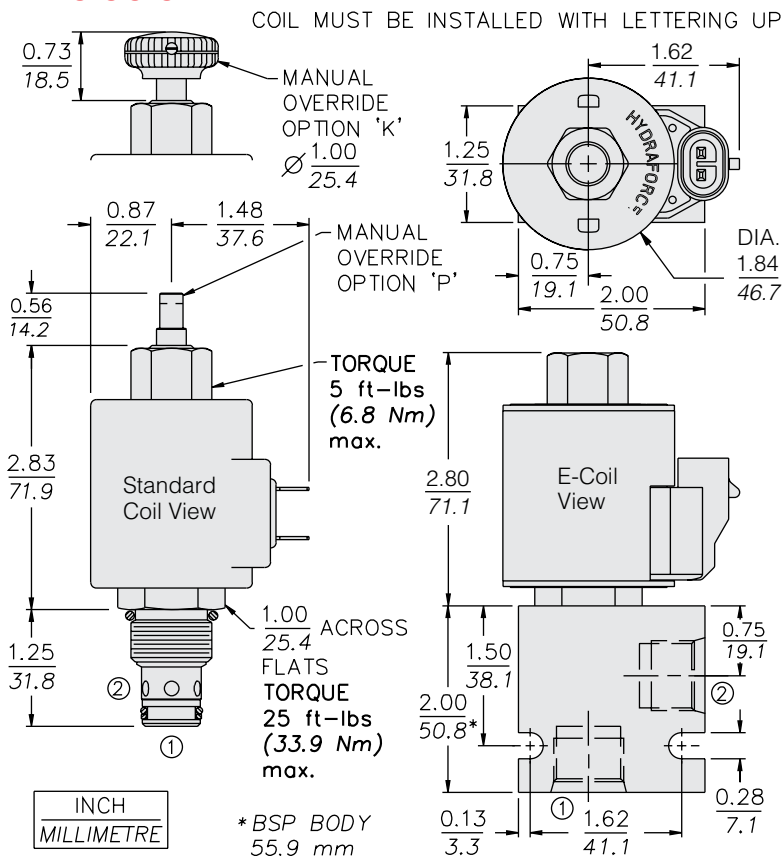
Voltage	Hydraforce code	Article no.	Price £	Price €
CARTRIDGE VERSION				
24V DC	SV10-21-0-N-24DG	SV1021C24	£121.10	€145.40
110V AC	SV10-21-0-N-115AG	SV1021C115	£141.00	€169.10
220V AC	SV10-21-0-N-230AG	SV1021C230	£141.00	€169.10
INLINE WITH BODY 1/4" BSP				
24V DC	SV10-21-2B-N-24DG	SV10212B24	£159.90	€191.90
110V AC	SV10-21-2B-N-115AG	SV10212B110	£179.70	€215.70
220V AC	SV10-21-2B-N-230AG	SV10212B230	£123.00	€147.60
INLINE WITH BODY 3/8" BSP				
24V DC	SV10-21-3B-N-24DG	SV10213B24	£159.10	€190.90
110V AC	SV10-21-3B-N-115AG	SV10213B115	£178.90	€214.70
220V AC	SV10-21-3B-N-230AG	SV10213B230	£178.90	€214.70
INLINE WITH BODY 1/2" BSP				
24V DC	SV10-21-4B-N-24DG	SV10214B24	£159.10	€190.90
110V AC	SV10-21-4B-N-115AG	SV10214B115	£178.90	€214.70
220V AC	SV10-21-4B-N-230AG	SV10214B230	£178.90	€214.70

with nitril seals

WITH 'G' DIN CONNECTOR PLUG

On request - Viton Seals - Screen filter protection - Manual Override
On request - For DC coils with spade or push on connections

Dimensions



Materials

Cartridge:

Weight: 0.16 kg. (0.35 lbs.)
Steel with hardened work surfaces.
Zinc-plated exposed surfaces.
Buna N O-rings and polyester elastomer back-up standard.

Standard Ported Body:

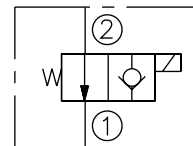
Weight: 0.16 kg. (0.35 lbs.)
Anodized high-strength 6061 T6 aluminum alloy, rated to 207 bar (3000 psi).
Ductile iron bodies available; dimensions may differ.

Standard Coil:

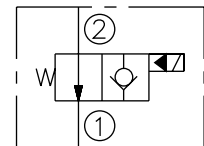
Weight: 0.27 kg. (0.60 lbs.)
Unitized thermoplastic encapsulated.

Symbols

USASI:



ISO:



Performance (Cartridge Only)

