



SV10-20

2 Way, Normally Closed, 207 BAR Rated

A solenoid-operated, 2-way, normally closed, poppet-type, screw-in hydraulic cartridge valve, designed to function as a load holding or blocking valve in applications requiring low internal leakage.

Materials

Cartridge:

Weight: 0.16 kg. (0.35 lbs.)
Steel with hardened work surfaces.
Zinc-plated exposed surfaces.
Buna N O-rings and polyester elastomer back-up standard.

Standard Ported Body:

Weight: 0.16 kg. (0.35 lbs.)
Anodized high-strength 6061 T6 aluminum alloy, rated to 207 bar (3000 psi).
Ductile iron bodies available. dimensions may differ.

Standard Coil:

Weight: 0.27 kg. (0.60 lbs.)
Unitized thermoplastic encapsulated.

Voltage	Hydraforce code	Article no.	Price £	Price €
CARTRIDGE VERSION				
24V DC	SV10-20-0-N-24DG	SV1020C24	£101.00	€121.20
110V AC	SV10-20-0-N-115AG	SV1020C115	£120.80	€144.90
220V AC	SV10-20-0-N-230AG	SV1020C230	£120.80	€144.90
INLINE WITH BODY 1/4" BSP				
24V DC	SV10-20-2B-N-24DG	SV10202B24	£139.70	€167.70
110V AC	SV10-20-2B-N-115AG	SV10202B110	£159.50	€191.40
220V AC	SV10-20-2B-N-230AG	SV10202B230	£159.50	€191.40
INLINE WITH BODY 3/8" BSP				
24V DC	SV10-20-3B-N-24DG	SV10203B24	£138.90	€166.70
110V AC	SV10-20-3B-N-115AG	SV10203B115	£158.70	€190.50
220V AC	SV10-20-3B-N-230AG	SV10203B230	£158.70	€190.50
INLINE WITH BODY 1/2" BSP				
24V DC	SV10-20-4B-N-24DG	SV10204B24	£138.90	€166.70
110V AC	SV10-20-4B-N-115AG	SV10204B115	£158.70	€190.50
220V AC	SV10-20-4B-N-230AG	SV10204B230	£158.70	€190.50

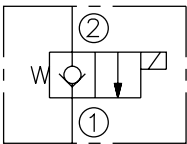
with nitril seals

WITH 'G' DIN CONNECTOR PLUG

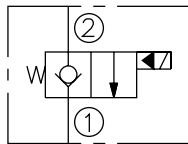
On request - Viton Seals - Screen filter protection - Manual Override
On request - For DC coils with spade or push on connections

Symbols

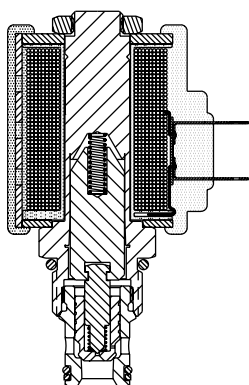
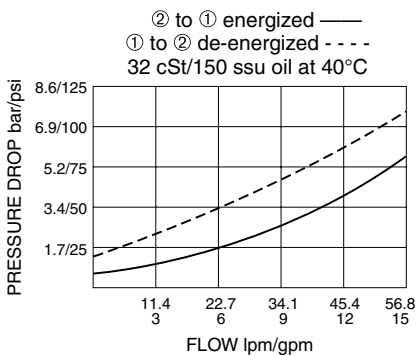
USASI:



ISO:



Performance (Cartridge Only)



Dimensions

