



Materials

Cartridge:

Weight: 0.09 kg. (0.20 lbs.);
Steel with hardened work surfaces.
Zinc-plated exposed surfaces;
Buna N O-rings and back-ups
standard.

Standard Ported Body:

Weight: 0.16 kg. (0.35 lbs.); Anodized
high-strength 6061 T6 aluminum
alloy, rated to 207 bar (3000 psi);
Ductile iron bodies available;
dimensions may differ.

Standard Coil:

Weight: 0.11 kg. (0.25 lbs.);
Unitized thermoplastic encapsulated.

SV08-24

2 Way, Normally Closed, 207 BAR Rated

A solenoid-operated, two-way, normally closed, direct-acting, spool-type, screw-in hydraulic cartridge valve, designed to operate as a bidirectional blocking valve in low flow circuits.

Voltage	Hydraforce code	Article no.	Price £	Price €
CARTRIDGE VERSION				
24V DC	SV08-24-0-N-24DG	SV0824C24	£81.60	€97.90
110V AC	SV08-24-0-N-115AG	SV0824C115	£101.80	€122.10
220V AC	SV08-24-0-N-230AG	SV0824C230	£108.20	€129.90
INLINE WITH BODY 1/4" BSP				
24V DC	SV08-24-2B-N-24DG	SV08242B24	£117.90	€141.50
110V AC	SV08-24-2B-N-115AG	SV08242B110	£138.10	€165.70
220V AC	SV08-24-2B-N-230AG	SV08242B230	£144.60	€173.50
INLINE WITH BODY 3/8" BSP				
24V DC	SV08-24-3B-N-24DG	SV08243B24	£117.90	€141.50
110V AC	SV08-24-3B-N-115AG	SV08243B115	£138.10	€165.70
220V AC	SV08-24-3B-N-230AG	SV08243B230	£144.60	€173.50

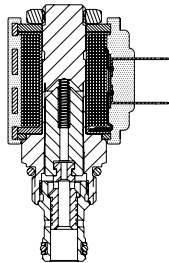
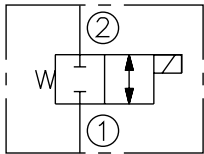
with nitril seals

WITH 'G' DIN CONNECTOR PLUG

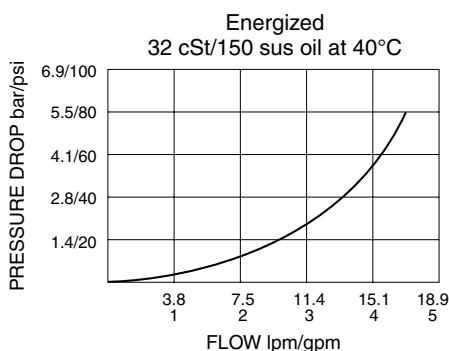
On request - Viton Seals - Screen filter protection - Manual Override
On request - For DC coils with spade or push on connections

Symbols

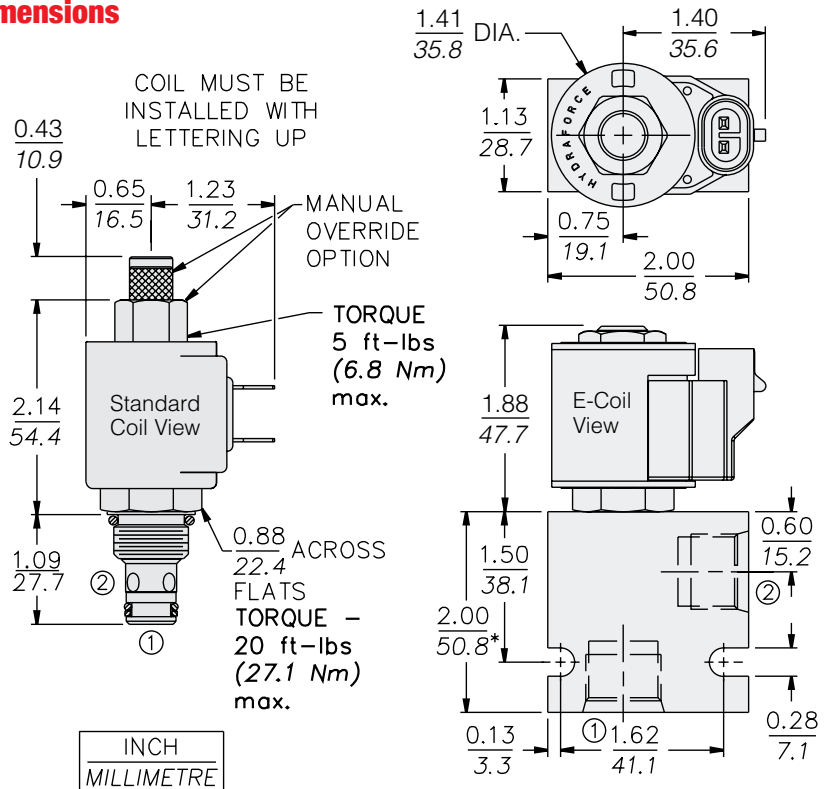
USASI/ISO:



Performance (Cartridge Only)



Dimensions



* BSP BODY - 55.9 mm