



Materials

Cartridge:

Weight: 0.09 kg. (0.20 lbs.)
Steel with hardened work surfaces.
Zinc-plated exposed surfaces.
Buna N O-rings and back-ups standard.

Standard Ported Body:

Weight: 0.16 kg. (0.35 lbs.)
Anodized high-strength 6061 T6 aluminum alloy, rated to 207 bar (3000 psi).
Ductile iron bodies available; dimensions may differ.

Standard Coil:

Weight: 0.11 kg. (0.25 lbs.)
Unitized thermoplastic encapsulated.

SV08-22

2 Way, Normally Closed, 207 BAR Rated

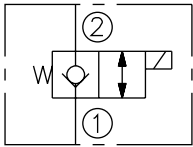
A solenoid-operated, 2-way, normally closed, poppet-type, screw-in hydraulic cartridge valve, designed for low leakage blocking and load holding applications.

Voltage	Hydraforce code	Article no.	Price £	Price €
CARTRIDGE VERSION				
24V DC	SV08-22-0-N-24DG	SV0822C24	£91.70	€110.00
110V AC	SV08-22-0-N-115AG	SV0822C115	£111.90	€134.20
220V AC	SV08-22-0-N-230AG	SV0822C230	£118.30	€142.00
INLINE WITH BODY 1/4" BSP				
24V DC	SV08-22-2B-N-24DG	SV08222B24	£128.00	€153.60
110V AC	SV08-22-2B-N-115AG	SV08222B110	£148.20	€177.90
220V AC	SV08-22-2B-N-230AG	SV08222B230	£154.70	€185.60
INLINE WITH BODY 3/8" BSP				
24V DC	SV08-22-3B-N-24DG	SV08223B24	£128.00	€153.60
110V AC	SV08-22-3B-N-115AG	SV08223B115	£148.20	€177.90
220V AC	SV08-22-3B-N-230AG	SV08223B230	£154.70	€185.60
with nitril seals				
WITH 'G' DIN CONNECTOR PLUG				

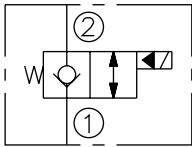
On request - Viton Seals - Screen filter protection - Manual Override
On request - For DC coils with spade or push on connections

Symbols

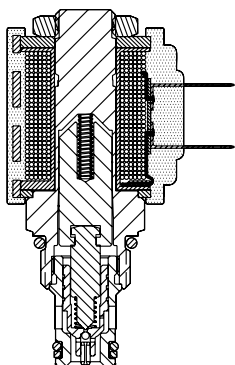
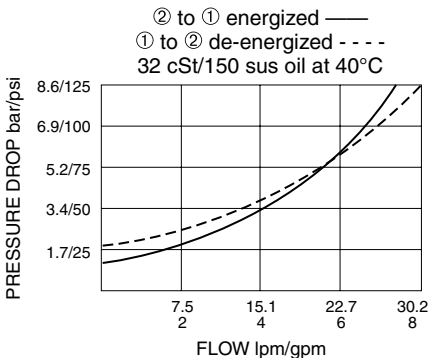
USASI:



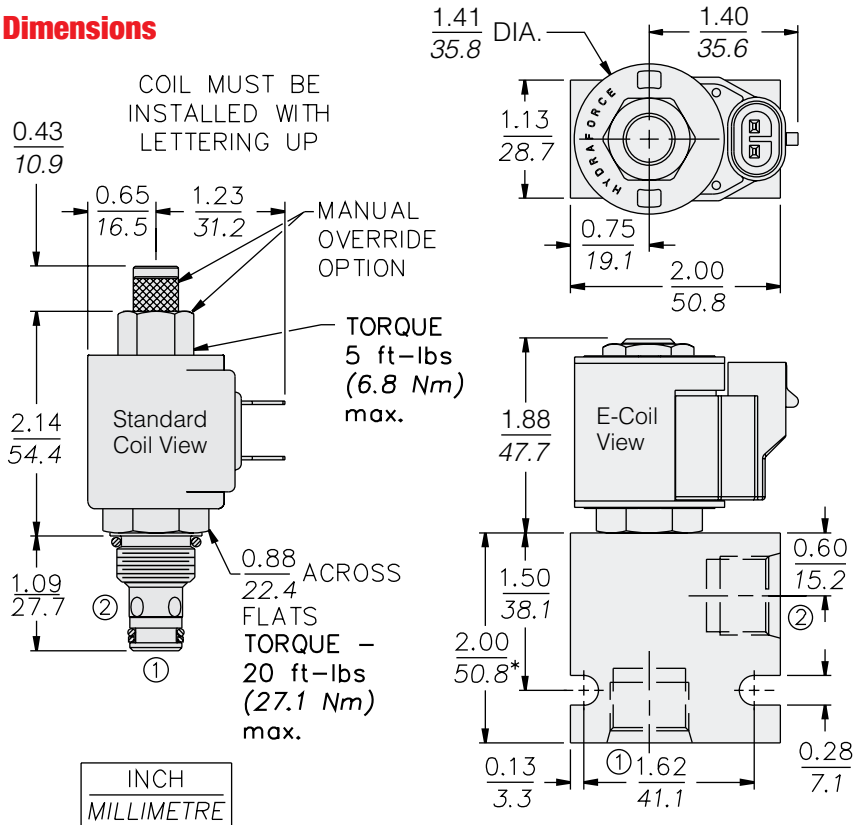
ISO:



Performance (Cartridge Only)



Dimensions



* BSP BODY - 55.9 mm